

EditWriter6 – New User Features

[EditWriter](#) is a software program developed by the National Program of Cancer Registries (NPCR) to create, modify, and manage an edits metafile for cancer data items collected by cancer registries. The North American Association of Central Cancer Registries (NAACCR) uses EditWriter to create a metafile of standard edits used by both hospital and central registries. Central registries in turn use EditWriter to customize the edits or edit sets within the standard metafile for distribution to their reporting facilities. This ensures that cancer data meets both standard setter requirements and any additional requirements imposed by the central registry.

A new version of the EditWriter software was released in January, 2024. EditWriter 6 preserves most of the functionality of previous versions as well as introducing several new features that make the program more efficient to use. This article highlights some of these new features for the benefit of central registry metafile administrators and others who work with edits and edit sets.

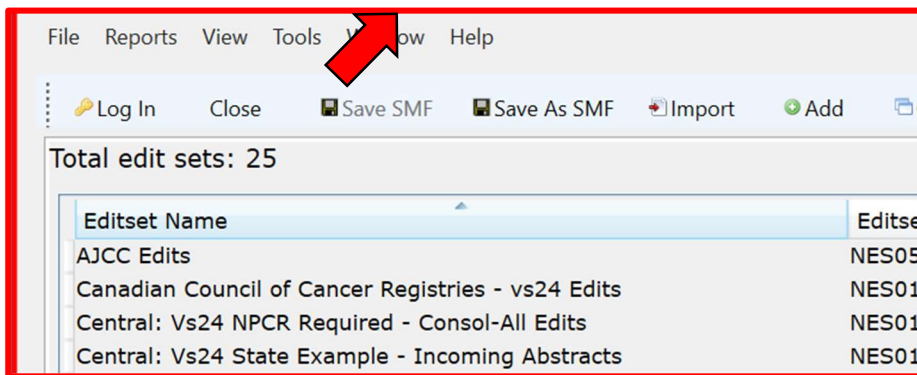
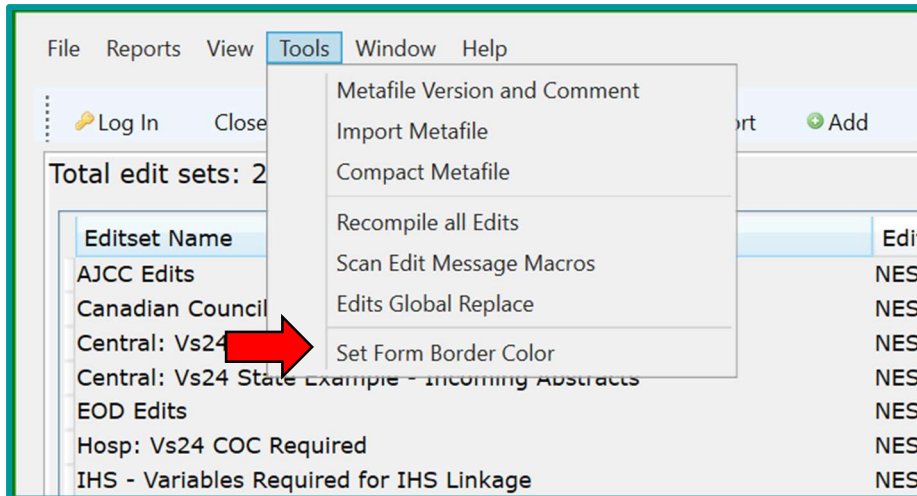
1. Color Borders

In EditWriter6, windows are not fixed to the opening screen and therefore may hide behind each other or stack along the taskbar. To manage multiple metafiles, you can open additional instances of the program and other metafiles and assign different colored borders to each metafile's frames. The default border color is teal, but red and blue are also available and highly effective.

How to Set Border Colors

1. **Navigate to the Tools Menu:** Select `Tools` from the top menu.
2. **Open the Border Color Settings:** Click on `Set Form Border Color`.
3. **Choose a Color:** In the Color Picker, select your desired color for the metafile.
4. **Apply and Close:** Click `Apply Settings` and then `Close`.

The selected color will be applied to all windows associated with that metafile, making it easier to manage multiple files simultaneously.

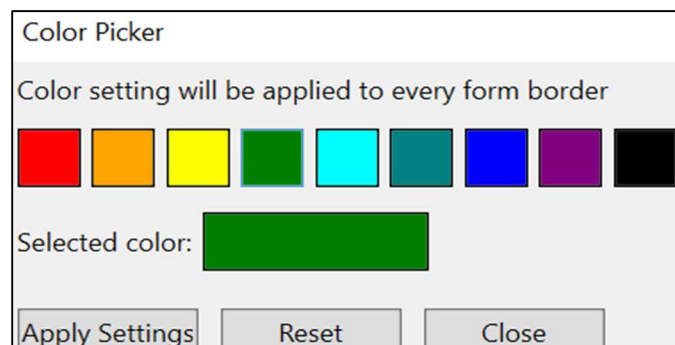


2. Edit Filters

EditWriter6 now includes advanced filtering capabilities to compare and analyze different edit sets. For example, you can identify edits present in the NPCR Consolidated edit set but not in the NPCR State Example edit set.

How to Use Edit Filters

1. **Open the Edits Tab:** Click on the `Edits` tab at the bottom of the main window.
2. **Access Filter** on `Filter` from top menu, then `Sets` in the window.
3. **Set Filter**
 - o In the

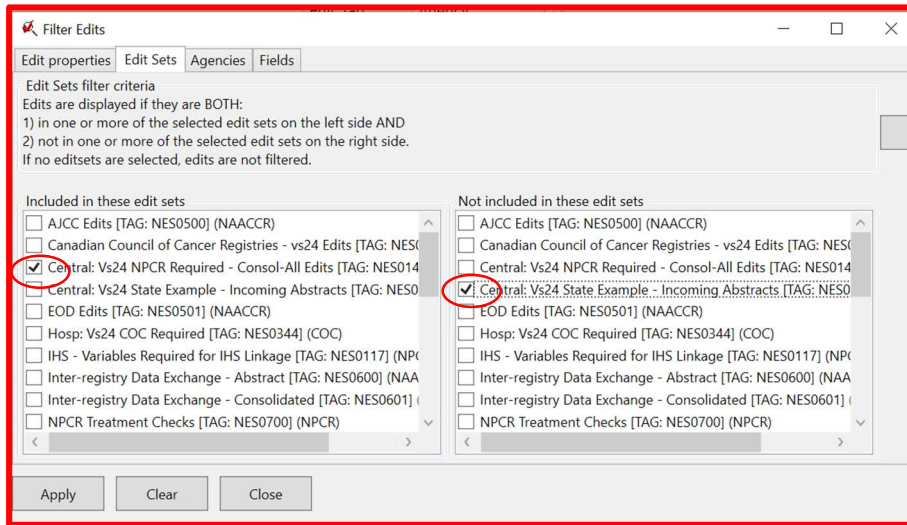


Options: Click the second-to-select `Edit Filter Edits`

Criteria: left column ("Included in

- o these edit sets"), select Central: Vs24 NPCR Required - Consol-All Edits.
 - o In the right column ("Not included in these edit sets"), select Central: Vs24 State Example - Incoming Abstracts.
4. **Apply the Filter:** Click Apply and then Close.

For this example, the filter identifies 92 edits in the NPCR Consol-All Edits set that are not in the State Example set and 23 edits in the reverse comparison, highlighting a difference of 69 edits.



Comparing Other Edit Sets

To compare the NPCR Consolidated edit set with the SEER Transmit edit set:

- Set the filter accordingly and you will find that SEER includes 1112 edits that are not in the NPCR Consolidated edit set.

3. Filtered Edits for Edit Sets

You can also add to an edit set directly from a filtered list of edits. The Edit Set form now has a filter button that will display the filtered edits shown on the Edit form, which can then be moved into the edit set singly or as a group. Filtered groups might include all custom edits, all new edits, all changed edits for a metafile version, all AJCC edits, all EOD edits – any group of edits that can be defined using the edit filters. The edits can be moved into an existing edit set, or even into a new edit set.

Steps to Create or Update Edit Sets

1. **Filter Edits**
2. **Open Edit Set to be Updated, or Create New Edit set**
3. **Select Filtered Edits:** Click on filter icon above left-hand column

4. **Select Edits to Move**

- Select all edits by clicking on first edit in column + Shift

5. **Move edits into Edit Set:** Click on right-pointing green arrow

The filtered edits for the example are included in the NPCR Consolidated Edit Set but not in the SEER Edit Set.

Edit Set name: SEER: Vs 24 Transmit Edits Agency Code: SEER
Last Changed: 06/25/2024 11:17:47 Edit Set Tag: NES0334

Description
This edit set includes all edits required by SEER for transmission from SEER registries in NAACCR24 format based on the SEER requirements provided in the Required Status Table of Standards for Cancer Registries, Volume II, Version 24.
R and RC Collection only data items not included by SEER in the Transmit Edit Set:
Addr at DX--City
County at DX Reported

Available Edits in this Metafile: 203 (filtered)

Edit Name	Edit T
_SYS AJCC ID (NAACCR)	N2815 ^
_SYS Schema ID, Primary Site, Histology (NAACCR)	N2824
Addr at DX--City (NAACCR)	N0795
Addr at DX--No/Street (NAACCR)	N0348
Addr at DX--Postal Code (NAACCR)	N0123
Addr at DX--Postal Code, Addr at DX--State (CO)	N0349
Addr at DX--State, Postal Code Range (NAACCR)	N0905
Addr at DX--Supplementl (NPCR)	N0537
Autopsy Only, RX 03-2022 (NPCR)	N0831 v

Edits in this Edit Set: 1579

Edit Name	Edit T
_SYS AJCC ID, Date of Diagnosis (NAACCR)	N2822 ^
_SYS AJCC ID, Site, Histo, Age (NAACCR)	N4205
_SYS AJCC ID, Site, Histo, Sex (NAACCR)	N3068
_SYS Schema ID (NAACCR)	N2816
_SYS Schema ID, AJCC ID (NAACCR)	N2814
_SYS Schema ID, Date of Diagnosis (NAACCR)	N2823
_SYS Schema ID, Site, Histo, Sex (NAACCR)	N3069
Addr at DX--State (NAACCR)	N0122
Adenoid Cystic Basaloid Pattern, Date DX (NAACCR)	N2665 v

Save Close

4. Filtered Error Messages

Error messages can be numerous and complex, often using tokens like %F[number] and %V[number] to refer to specific fields and values. EditWriter6's new filtering feature helps manage these messages more effectively.

How to Filter Error Messages

1. **Filter by Tokens:** Use the filter to search for messages containing specific tokens, such as %F1 and %V2, to narrow down your list.
2. **Search for Specific Criteria:** For example, searching for messages that include "must be blank" and "before 2023" can quickly pinpoint relevant error messages.

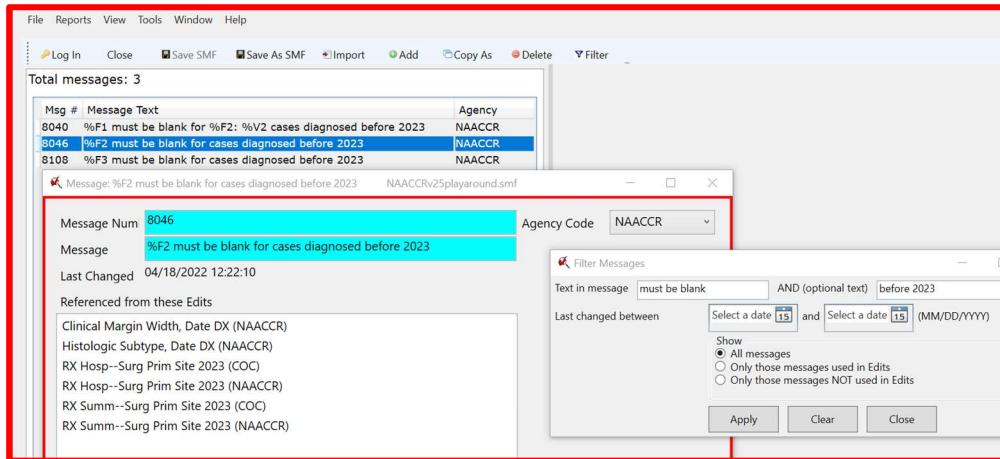
The screenshot shows the 'Edit name' field set to 'p16, Date DX (NAACCR)' and the 'Agency Code' set to 'NAACCR'. The 'Last Changed' timestamp is '08/29/2023 12:00:39' and the 'Edit Tag' is 'N6600'. A table on the left lists data items: 1 p16, 2 Schema ID, and 3 Date of Diagnosis. The 'Default Error Message Number' is 7616. The 'Raw Message' is '%F1 must be blank for cases diagnosed before 2021'. The 'Display Error Message' is 'p16 must be blank for cases diagnosed before 2021'. The 'Error Messages' list includes: 7159: %V1 not valid code for %F1, 7616: %F1 must be blank for cases diagnosed before 2021, 8040: %F1 must be blank for %F2: %V2 cases diagnosed before 2023, and 8149: %F1 must be blank for %F2: %V2 cases diagnosed before 2024. The 'Error Messages' tab is selected, and the list of messages is circled in red.

The above screen shot demonstrates error messages using tokens for %F1, p16 in the data item list, and %F2, Schema ID in the data item list.

Tokens are handy and the same messages can be used in multiple edits if they fit the logic. They can be hard to find though. Filtering the messages for the single value %F1 brings up 530 messages. Using the new message filter with two search terms, %F1 and %V2, shortens the list to 152 messages to search.

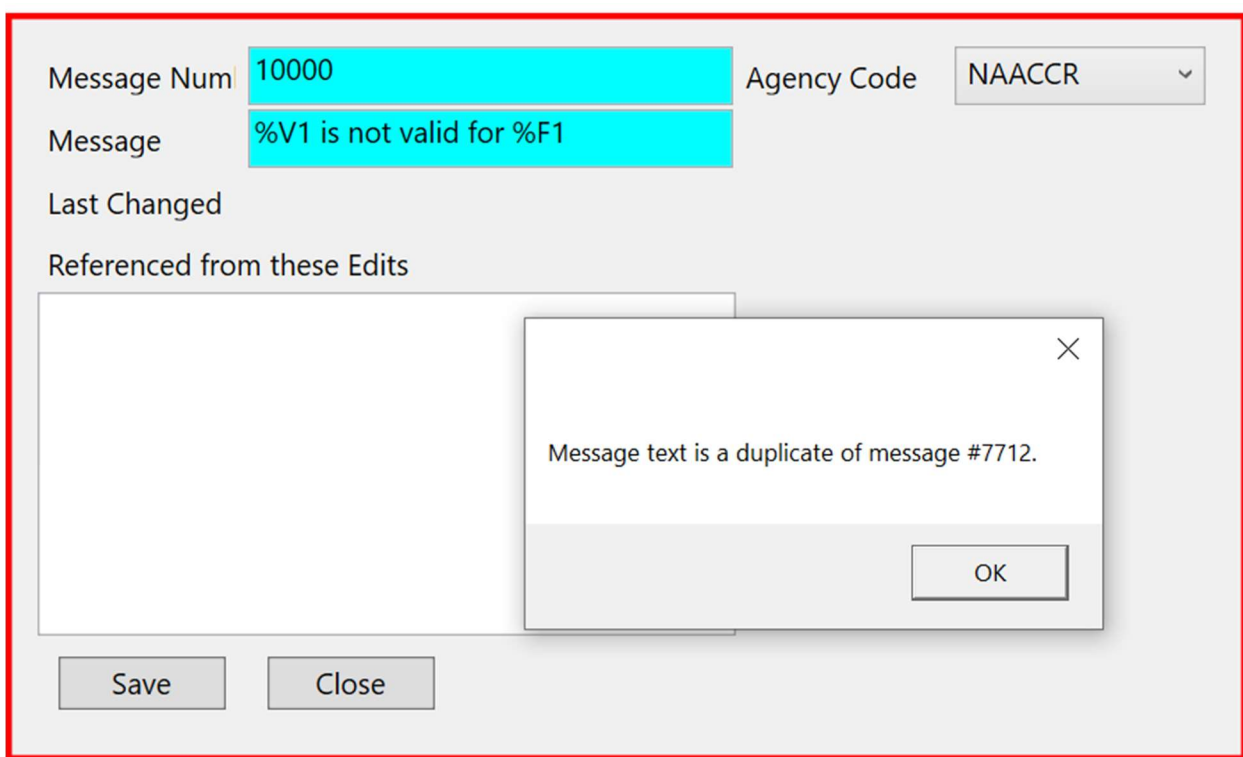
The 'Filter Messages' dialog box has the following fields and options: 'Text in message' is '%F1', 'AND (optional text)' is '%V2', 'Last changed between' has two date pickers set to '15' (MM/DD/YYYY), and the 'Show' section has three radio buttons: 'All messages' (selected), 'Only those messages used in Edits', and 'Only those messages NOT used in Edits'. The 'Apply', 'Clear', and 'Close' buttons are at the bottom.

Searching on “must be blank” and “before 2023” identifies 3 error messages that meet the search. Clicking on 8046 shows that this message is used in 6 edits.



You can use error messages with other agencies in your custom edits, but you cannot modify them.

If you create your own messages with your agency, you must ensure that the tokens and errors fit the edits where the messages are used. If you create a message that duplicates an existing message, EditWriter will generate a dialogue form with the number of the existing message.



5. Compact Metafile

EditWriter 6 includes a tool to compact the metafile. The standard metafile is compacted before distribution, but it is recommended that any central registries creating custom metafiles do the same. When creating a custom metafile, if components are removed from the standard metafile, compacting may reduce the file size considerably and allow more options for distribution.

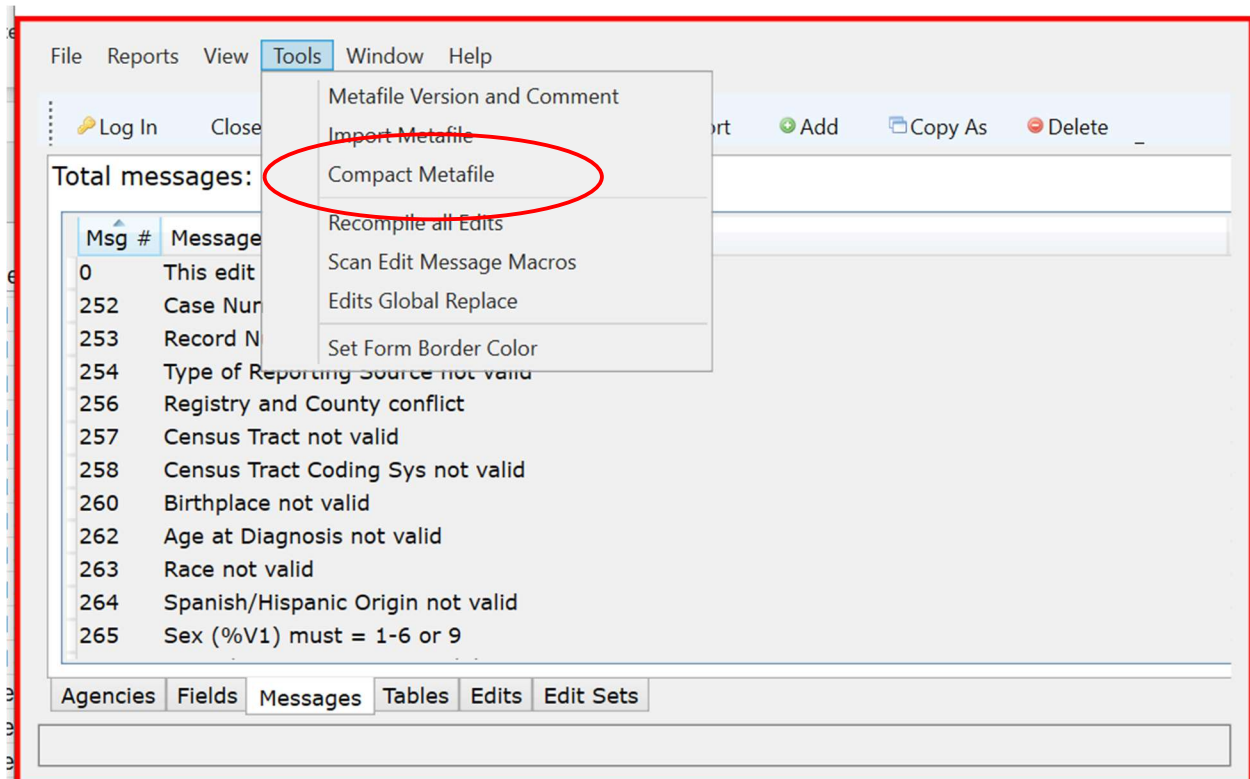
How to Compact a Metafile

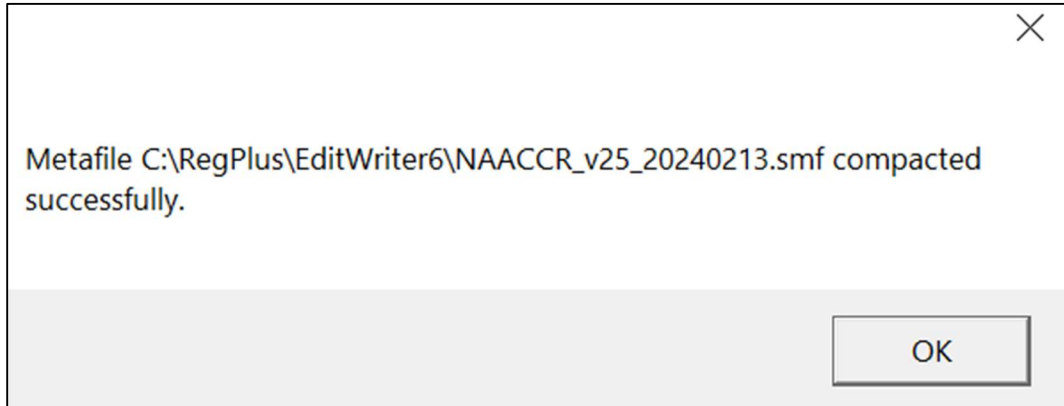
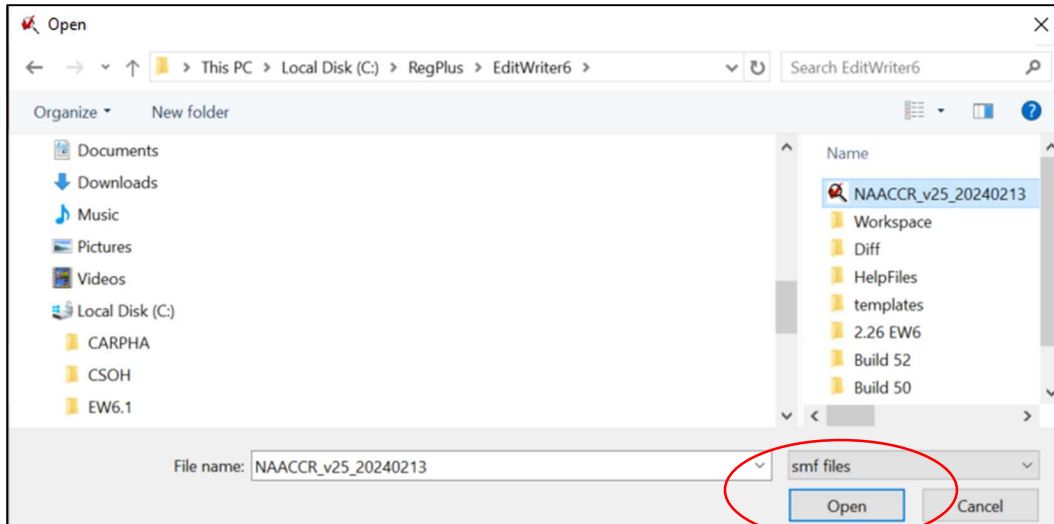
1. Open a Metafile Other than the Metafile to be Compacted

2. Select Tools, Compact Metafile

3. Select Metafile to be Compacted: Click on Open.

- An error message will appear if you try to compact a metafile that is already open.
- A message will appear if the metafile is successfully compacted.





CONCLUSION

The colored borders and filter options make working with metafiles more manageable and efficient. New filter options for edits, as well as the ability to bring filtered lists into the edit set, are particularly useful for maintaining edit set content according to standard and custom registry specifications. Additionally, filters on error messages help reduce the proliferation of metafile objects. Lastly, the compact tool, while not directly used in writing or maintaining edits and edit sets, can facilitate more options for metafile distribution by reducing file size.

These new features emerged from conversations between program users and developers. Suggestions or recommendations for enhancements to new versions of EditWriter are always welcome.